

TF300 *wireless fishfinder*

Quick Start Guide



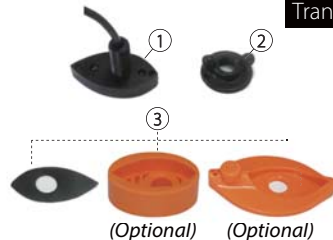
TOSLON

Check the content

Display



Transducer



1) Transducer 2) Knobs 3) Rubber

Note: the rubber is different according to different bait boats

CCU



- 1) CCU
- 2) Power cable
- 3) Charger cable
- 4) Data conversion cable
- 5) Antenn (2pcs; one display; another for CCU)
- 6) Battery holder
- 7) Fedder cable
- 8) Valcro

Installation (transducer)

1) For general boats, like Carp Madness, Anatec Monocoque, you need to drill a hole on the boat bottom to fix the transducer.



2) For boats of Carplounge/- Waveruner/ Vegaboat/Carpboat etc, there is a transducer groove on the bottom. So, you only need to simply match the transducer to the boat with a rubber.



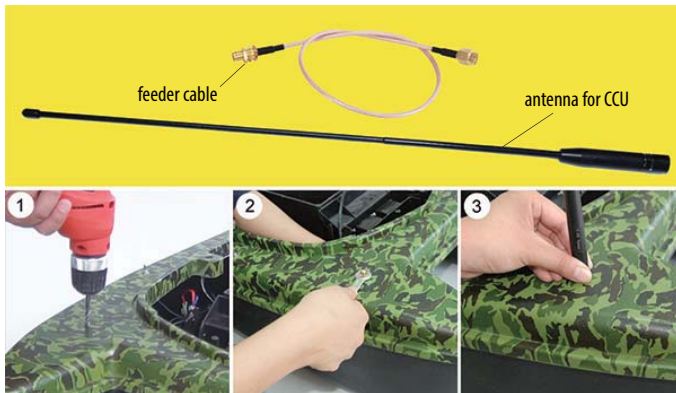
3) For Anatec catamaran bait boat, there is a transducer groove on the bottom. So, you only need simply match the transducer to the boat with a rubber.



Installation (antenna & wiring)

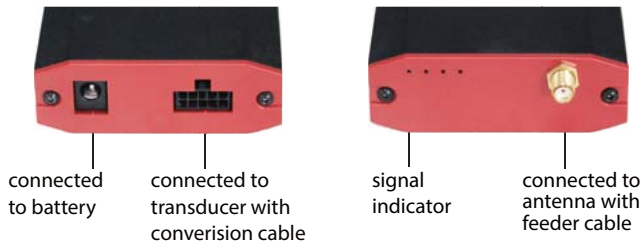
Antenna Installation

- 1) Drill an hole (5mm diameter) on the selected position.
- 2) Screw down the washer and nut from the feeder cable, then hold the cable through the hole from inner housing, and screw tightened the nut by a wrench.
- 3) Screw the antenna on boat



Wiring

After all the installation are finished, please connect the parts (transducer, antenna, battery) to the CCU. Then fix the CCU inner the boat.



	For display	For transmitter
Recommended voltage	6-12V	6-12V
Absolute Maximum voltage	14.8V	14.8V

→ **Note:** overvoltage may burn the elements in the device!

From bellow shows the voltage range of the most popular batteries in the market:

Battery Type	Voltage	Permission
12V Lead-acid	10.8v~14.8V	✓
8*AA NiMH	7.8V~10.6V	✓
8*AA Alkaline	7.5V~12.8V	✓
2S Lithium	5.6~8.4V	✓
3S Lithium	8.4~12.6V	✓
4S Lithium	11.2V~16.8V	✗



Using Instruction

- 1) TF300 can be used by fixing to a remote.
- 2) TF300 also can be used by fixing to a tripod.

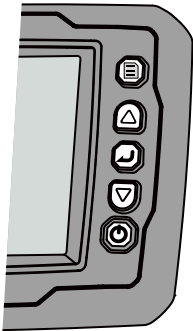
Note: make sure the antenna is tighten on the boat, otherwise the R/C distance will be greatly shorten.








fixed to a remote.

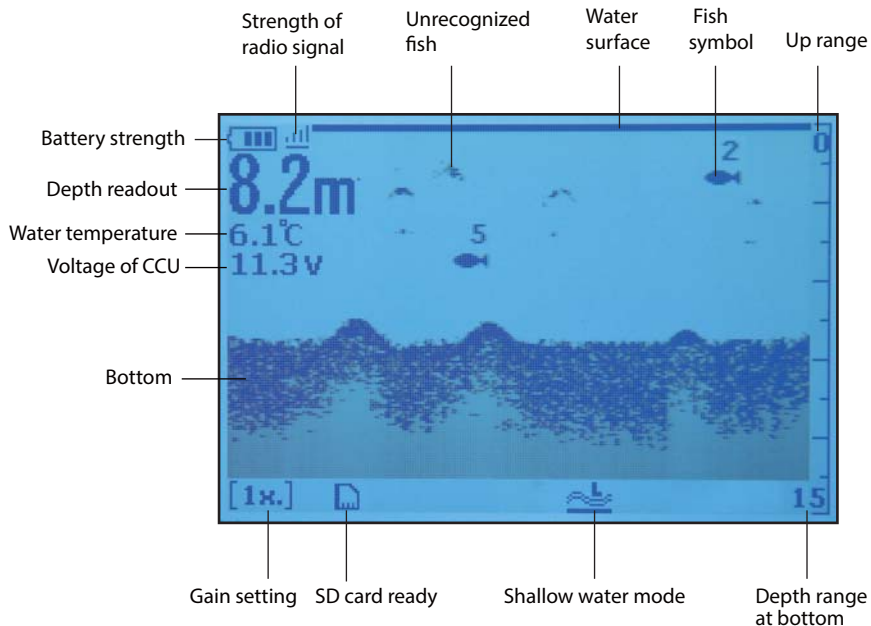


fixed to a tripod



Key	Function
 [Menu]	1) Open menu settings 2) Switch between menus
 [Up]	1) Move up to select menu 2) Increase a value of option
 [Enter]	1) Confirm a setting / selection 2) Enter the menu settings
 [Down]	1) Move down to select menu 2) Decrease a value of option
 [Power / Exit]	1) Power on / off the unit 2) Exit the selection or menu 3) Turn on / off the backlight

What's on the display



In most time the default setting is enough. However in some situation, to get a better using, you need adjusting the menu setting.

1) Sensivity

Determines how echoes will be displayed on the screen. Increasing the sensitivity will make you see more details on the screen. In deep water, increasing the sensitivity. whereas in shallow decreasing the sensitivity.

2) Fish ID. Sens.

Fish ID. Sens. adjust the threshold of fish size display

Selecting a higher setting allows weak returns being displayed as fish, which is helpful especially when you are intending to find smaller fish species or bait fish.

Selecting a low setting will prevent weak sonar returns being displayed as fish, which will be very helpful when you are seeking large species of fish.

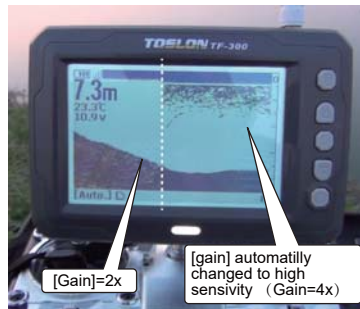
3) Gain

The gain controls the sensitivity of the hardware receiver. A higher gain makes the sonar more sensitive to echo returns, allowing it to display weaker targets. If the gain is set too high, the image might be cluttered with background noise.

Note: when set in [shallow water mode], the [Gain] option will be disable.

4) Shallow Mode

Used to get a better sonar performance in shallow water.



Menu List

Sonar	Sensitivity	Controls the level of details shown on the display
	Fish ID. Sens.	Adjust the threshold of fish size display. Higher setting allows weak returns being displayed as fish, while a low setting will prevent it being displayed as fish
	Surface Clarify	Reduces surface clutter by decreasing the sensitivity of the receiver near the surface
	Gain	The gain controls the sensitivity of the hardware receiver. A higher gain makes the sonar more sensitive to echo returns
	Shallow Mode	Used to get better sonar performance in shallow water
Display	Units	Set the units of measure for all depth or temperature related readouts
	Depth Range	Determine in which portion the bottom will be displayed on the screen
	Depth Offset	Adjust the digital depth readout to indicate depth from the waterline
	Color Invert	Invert the color of sonar image
	Chart Speed	Control how fast the sonar information moves across the screen
	Contrast	Let you to get a suitable display when you operate the unit
Alarm	Shallow Alarm	Sounds when the depth becomes equal to or less than the menu setting.
	Fish Alarm	Sounds when the fishfinder detects what it determines to be a fish
	CCU Alarm Vtg.	Alarm when the input battery voltage of transmitter is equal to or less than the setting
System	Beeper	Set if the sonar unit sound a tone or not when a key is pressed.
	Language	Select the display language for menus
	Backlight	Adjust the brightness of backlight
	Load Default	Used to restore original factory setting
	Simulator	Used to let you practicing using the Fishfinder as if you were on the water
	System Info	Show system information of device
	Dev. Mode	For engineering using
	CCU Update	Used to update CCU
Mode Select	Select a mode for sonar display	

Specifications and Features

Specifications	Display	Display size: 4.5"FSTN, Sunlight Viewable
		Resolution: 240*128Pixels; 4Gray Scal screen
		Language: Multi-language
	Sonar	Depth Capability: Max 30m (100ft)
		Sonar Frequency: 115Khz
		Sonar Beam Angle: 60deg @-10db
		Sonar Alarms: Fish / Shallow / Low Battery
	R/F	Radio Frequency: 433Mhz
		RC Power: 20dBm(note: normally 180m(600ft) range can be expected, the height of atenna and weather can result huge difference of the radio range)
		Radio Frequency: 433MHz
	Power	Power of Display: Li battery (BL-5C)
		Power of Transmitter: Powered by bait boat battery or DC6~12V/2.0W
	Technical and casing	Sensor Cable Length: 0.5m
		Sonar unit size: 134 x92 x 24mm
Operational Temperature: -10°C ~ 50°C		
Water Temp. Included in Transducer		
Display target depth reading above each fish symbol		
Features	Update the software of display & CCU (transmitter) via the built in SD card	
	3 level hardware gain setting to meet shallow/middle/deep water enviroment	
	Optimized shallow water mode for carp fishing	
	Extreme stable wireless performance envn in bad condition	
	Full two-year warranty; extended warrangies available	



SPECIALLY DESIGNED FOR ALL KINDS OF

BATTBOAT

YACHTING ELECTRONIC CO., LTD

Building 29, No. 2 Qiancheng Road,
Liuhu District, Nanjing City, China 211500
Tel: 0086-25-85399011 Fax: 0086-25-85359123
Email: support@toslon.com
www.toslon.com